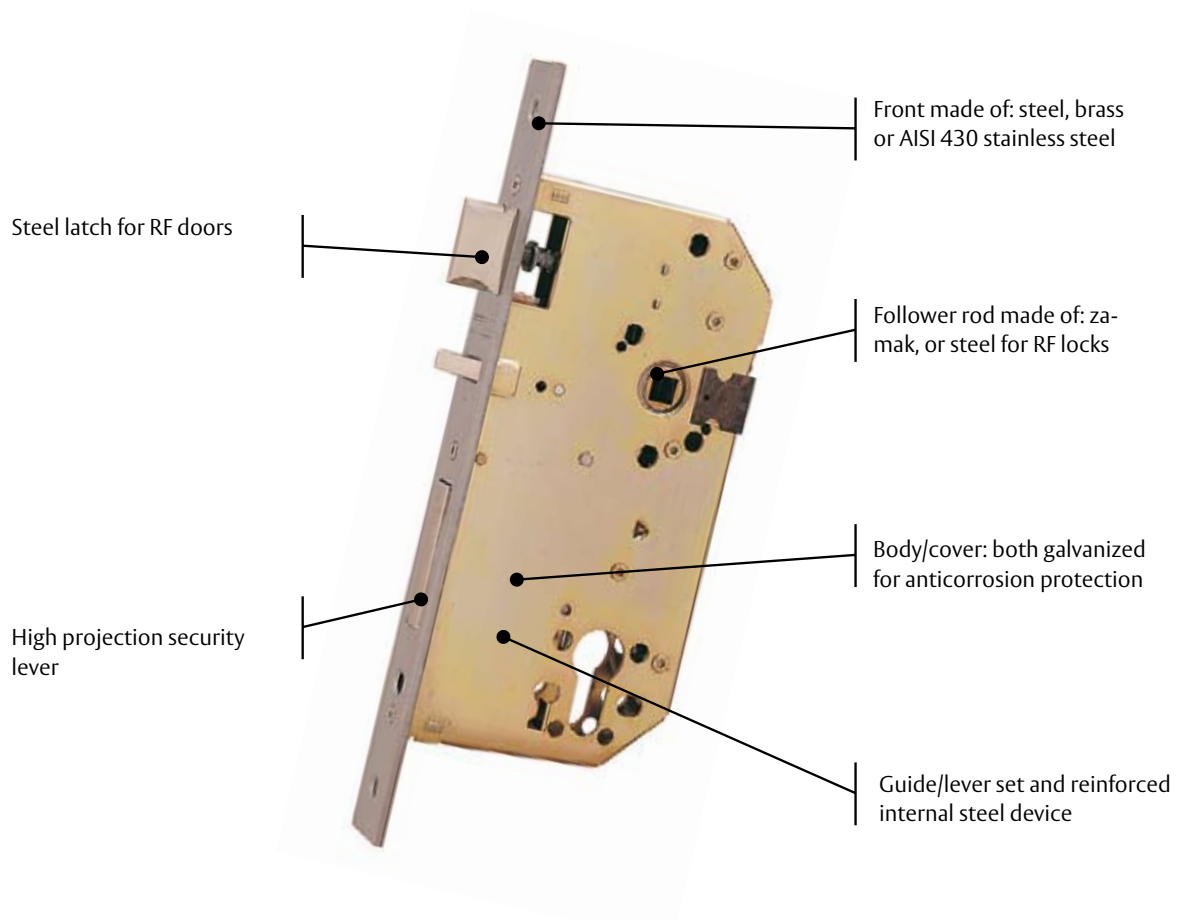


TESA

ASSA ABLOY



Components of the lock



Anticard security device

When we close the door without locking it with a lever, this device prevents the latch from being pushed in from the outside with a card or a radiography.

Protective antidrill follower rod

It is used in panic exit locks with a double follower rod - this protects the door from attempts of drilling it from the outside and inserting a handle in order to open it.

Finishes guarantee

Finishes		Layer hardness s/ANSI A 156.18	Adherence s/ASTM D 3359/90	Anticorrosion resistance s/prEN 1670
HL	Brass steel	4H	4B	up to 96 hours
HN	Brass steel	4H	4B	up to 96 hours
HE / AE	Glazed steel	4H	4B	up to 96 hours
NE	Black epoxy	4H	4B	up to 96 hours
AI	AISI 430 stainless	4H	4B	up to 96 hours

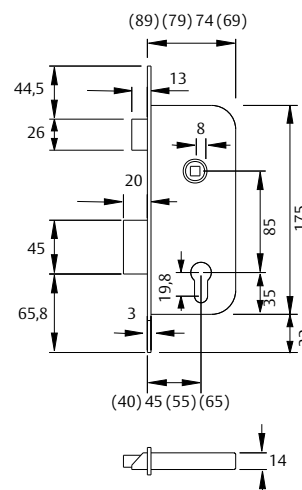
Building range

2030 series

- » Sashlock for timber doors.
- » Reversible.
- » Distance between axes: 85 mm.
- » Backset: 40/ 50/ 60/ 70 mm.
- » Follower: 8 mm. Thumbturn follower: 6 mm.
- » 1/2 rounded forend available.
- » Euro-profile 5 pin cylinder made to DIN V 18254 with 3 nickel plated steel sawn keys. HL/ AE finish: brass finished cylinder. HN/ NE/ AI finish: nickel finished cylinder.
- » Packed: 1/20 units.

Finish / entrance	40	50	60	70
Acero latonado (HL)	*	*	*	*
Acero niquelado (HN)	*	*	*	*
Acero esmaltado (HE)	*	*	*	*
Negro (NE)		*	*	*
Inox AISI 430 (AI)		*	*	*

Finish / entrance	40	50	60	70
2030	*	*	*	*
2031	*	*	*	*
2034	*	*	*	*
2035		*	*	*
2036	*	*	*	*



2030 Entrance

Features

- » Anti-friction Silent Tech latchbolt available: Smoother operation.

Operation

- » Reversible latchbolt withdraws from either side with levers or knobs or by cylinder.
- » 20 mm. double throw.

2030	Model	Backset	Finish	Packaging
	2030	40 / 50	HL	1 / 20
	2030	40 / 50	HN	1 / 20
	2030	40 / 50	AI	1 / 20
	2030	60 / 70	HL	1 / 20
	2030	60 / 70	HN	1 / 20
	2030	60 / 70	AI	1 / 20

Underline: "Express 5" service.

No underline: 15 working days maximum.

2031 Store room

Features

- » Deadlock. Backset: 40/ 50/ 60 mm.
- » 2031-U: Same dimensions than 2030, 2034 and 2035.

Operation

- » 20 mm. double throw.

2031	Model	Backset	Finish	Packaging
	2031	40 / 50	HL	1 / 20
	2031	40 / 50	HN	1 / 20
	2031	60	HL	1 / 20
	2031	60	HN	1 / 20
	2031	60	AI	1 / 20

Institutional range

2030F series

Hospitals, schools, office buildings, ... deal with intensive public traffic and rough use.

Locks included in the Commercial Range bring together reliability and functionality, and combine also with handles, panic bars, electro-magnetic devices, etc. provided by TESA.

Las cerraduras 2030F de la gama Institucional están certificadas según la norma UNE-EN 12209. Certificado CE.

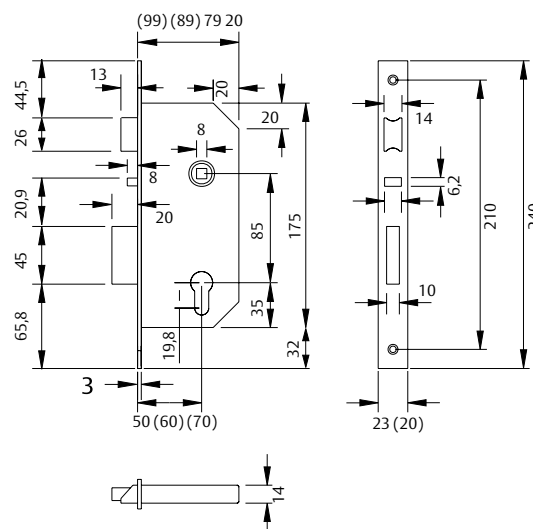
Features

- » Sashlock for timber doors.
- » Reversible latchbolt.
- » Distance between axes: 85 mm.
- » Backsets: 50/ 60/ 70 mm.
- » Follower: 8 mm. Thumbturn follower: 6 mm.
- » 1/2 rounded forend available.
- » Closed lockcase.
- » Euro-profile 5 pin cylinder made to DIN V 18254 with 3 nickel plated steel sawn keys. LP/ HL finish: brass finished cylinder. HN/ NE/ AI finish: nickel finished cylinder.
- » Packed: 1/20 units.



CERTIFIED ACCORDING
**UNE-EN
12209:2004**

2030F, 2030 E, 2030S		
HL	AI	NE
steel/pnt	steel/pnt	steel/pnt
steel/brass	stainless steel 430	steel/pnt
steel/brass	stainless steel 430	steel/pnt
stl/nickel	stl/nickel	stl/nickel
stl/nickel	stl/nickel	stl/nickel



Model	Follower	Anticard system	Interior operation	Exterior operation	Latchbolt	Deadbolt	Fire resistance	Antipanic	Notes
2030F	split	NO	handle/cylinder	handle/cylinder	YES	YES	YES	YES	Steel latchbolt.
2030F	standard	YES	handle/cylinder	cylinder	YES	YES	YES	YES	Steel latchbolt.
2S30	standard	YES	handle/cylinder	handle/cylinder	YES	YES	NO	YES	Silence latchbolt.
2035F	standard	NO	handle	handle	YES	NO	YES	NO	Passage door.
2037F	split	NO	bar/handle/cyl.	handle/cylinder	YES	NO	YES	YES	Reversible.
2038F	standard	NO	cylinder	cylinder	NO	NO	YES	YES	Sliding door.
2039F	standard	NO	handle	cylinder	YES	NO	YES	NO	Gate.
203MN	standard	YES	handle	cylinder	YES	YES	YES	YES	Automatic.

Cylinders

TESA

ASSA ABLOY



Global leaders manufacturing cylinders



TESA cylinders are manufactured according to the most advanced production processes, offering an extremely secure high quality product and meeting the requirements the market demands in every different area.

TESA's range of cylinders includes a great variety of profiles in every system. TESA also offers the possibility of combining mechanical cylinders with access control systems.

Security

Ranging from the most basic to the highest security patented, restricted-key models, our cylinders have been equipped with the most advanced protection systems: spring loaded pins, antiremoval system, etc., as befits TESA's position as the first European cylinder manufacturer. Our restricted key systems guarantee that no blank keys will be found in the market, thus ensuring protection against counterfeit keys.



Masterkeying capacity

All TESA systems can be master keyed. A masterkeying is a planned locking system in which the master key can open more than one cylinder, even if each cylinder has its own key. For offices, residential homes and plants of various sizes, masterkeying is the immediate solution that allows to establish an access control while reducing the number of keys that must be handled: security and comfort.



A wide range

We have classified our systems according to four standards:

- Type of key (dimple or sawn)
- Restricted key
- Degree of security
- Masterkeying capacity

The combination of such standards has created a peerless range in the market, covering every requisite in projects ranging from the residential to the institutional, from cost-efficient technical systems to high security patented systems, offering the distributor maximum profitability.



Guaranteed by TESA

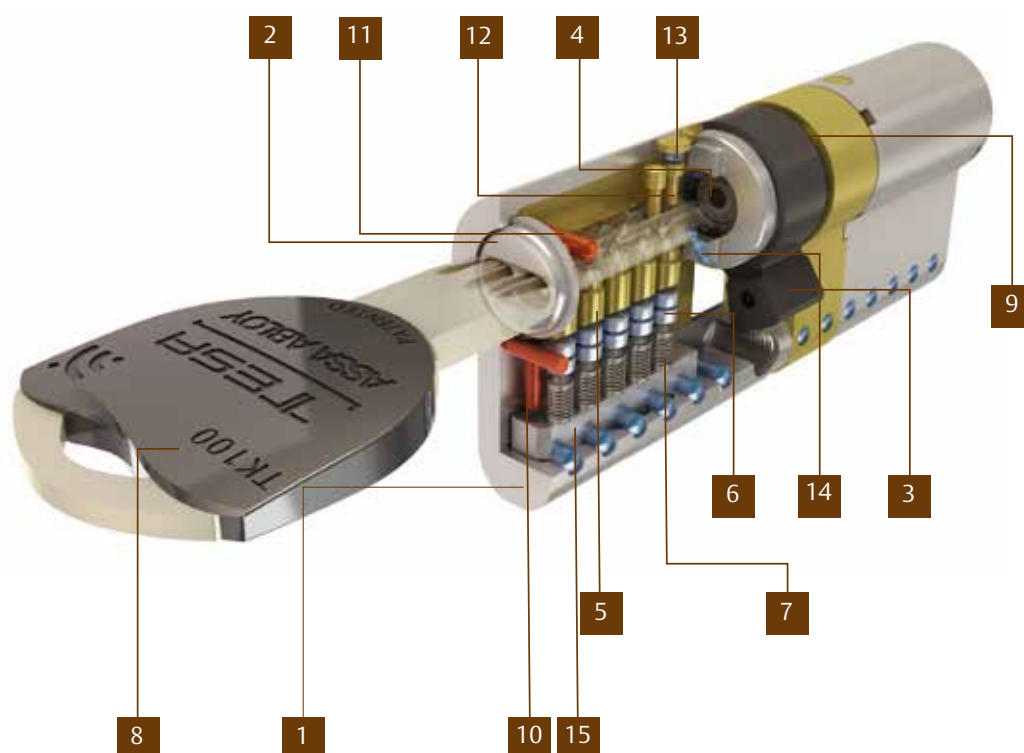
TESA meets the most demanding European standards for architectural fittings, in which cylinders are very important components in terms of protection and personal safety. Specifically, the EN 1303 European standard establishes five degrees of security (fire resistance, security against breakage, number of combinations, durability and corrosion resistance) for cylinders, based on design requisites and on practice tests simulating an attack.

The DIN standard specifies which standards must be met by cylinders in order to obtain masterkeying certifications. Other standards and certifications met by TESA's cylinders are UL (USA), NEN (Holland) and SS (Sweden).



Introduction

- » The terminology employed in order to specify the various components that form a cylinder.
- » Selection criteria. The facts we must bear in mind when prescribing a system.
- » Systems. In this part, we will define the features of each model.
- » Profiles and models for particular applications.
- » Keyings. In which we show the most usual diagrams.



	Description
1	Barrel / Shell / Body. Frame which support the assembly.
2	Rotor / Plug. Is the part where the key is inserted to lock / unlock.
3	Cam. Translates the rotating motion of the key into sliding bolt projection.
4	Clutch. Is the component that connects one rotor, in a double cylinder, with the cam.
5	Lower pin (main row). Determines the permutation of the cylinder.
6	Upper pin (main row). Lower pin counterpart.
7	Springs. Load the pinning.
8	Key. Main accesory. Operates the cylinders.
9	Retaining clips. Fix the cylinder in a functional way.
10	Drill-proof body pin. Gives resistance against drilling and mechanical attacks
11	Drill-proof rotor pin. Gives resistance against drilling and mechanical attacks
12	Lower pin (sec.row). Same function as the main row.
13	Upper pin (sec.row). Same function as the main row.
14	Sensor. Part of the patent. Protecst the cylinder against different opening methods.
15	Caps. Keep the pinning loaded

Standard cylinders (Basic range)

D

TE6

- » 6 spring loaded pins in one row.
- » Drill protection.
- » Bump proof lock.
- » Anti pick cylinder lock (Low resistance.)
- » 3 keys of nickel plated brass.
- » Conform to EN-1303 regulation.
- » Master key systems: Medium capability using different key ways.

Only available for masterkeying

Security

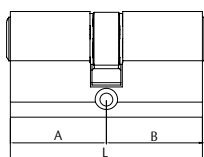
**

Masterkeying

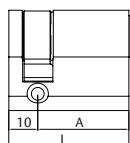


Profiles

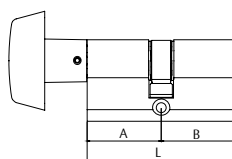
Euro double cyl.



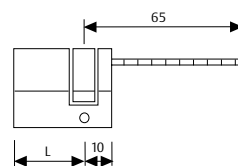
Euro single cylinder



Knob cylinder



Adjustable european



Round cylinder



Adjustable round cyl.



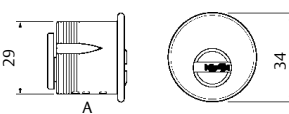
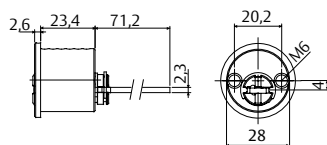
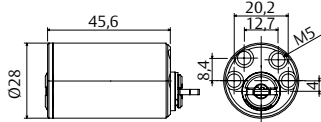
BRA



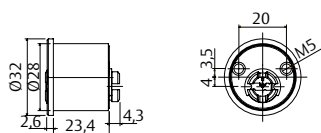
For knobsets (AM-KD-A)



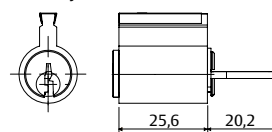
Outside



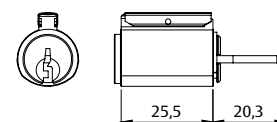
Inside



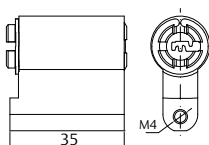
Master keyed



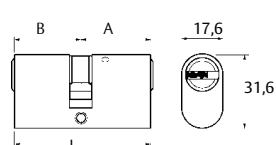
Key different and alike



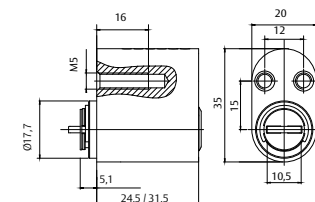
Padlocks



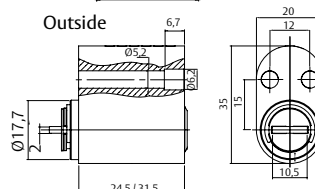
Oval english



Scandinavian
(Frontal fixing)

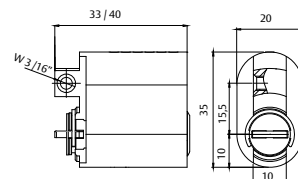


Outside



Inside

Lateral fixing model.



Standard cylinder TE6

Technical data

A cylinder designed to solve medium complexity master key suits. In addition, it includes a higher level of passive protections. Such as anti drill pins, bump proof pinning...etc.

Characteristics

- » Type: Sawn key. (Brass nickel plated).
- » NO. of rows: 1
- » NO. of pins: 6
- » Technology: Tumbler regular.
- » Permutation level: Grade 6.
- » Corrosion resistance: Grade B.
- » Pick protection: Medium level.
- » Drill resistant.
- » Bump proof cylinder lock.
- » Lifespan: 50,000 test cycles.
- » 3 keys per cylinder.

Options

- » Finishes: Brass / Nickel plated.
- » Cam: DIN R15 and R13
- » Formats available: Key different, mater keyed, key alike and specific codes.
- » Wide measurement and profile range.

Master key systems.

In addition to combine 10 heights per position this model has the possibility of using 3 different key profiles.

! Only available for masterkeying

Security	Masterkeying
**	**

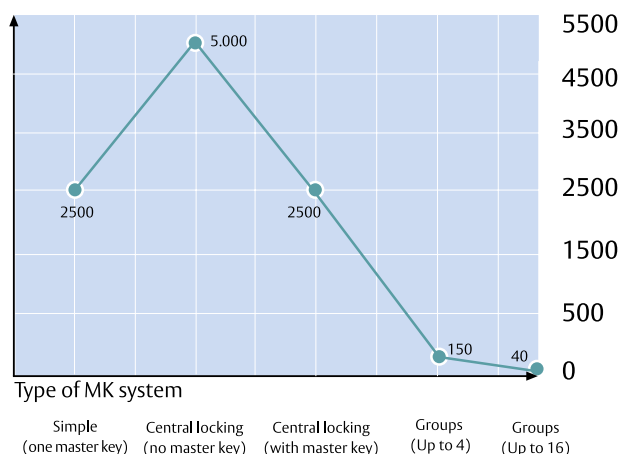


Recommendations

- » Use TESA lubricant to lengthen the maximum lifespan of the cylinder.
- » Use original keys to make copies.
- » For safety reasons, when you select a new cylinder, remember that once installed, it should not project more than 1mm.




Regular tumbler platform & key ways KT series
N° of single keys



Standard cylinder TE6

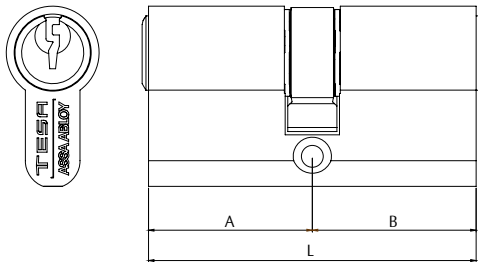
European profile

! Only available
for masterkeying

 50 units. (L≤90)
30 units. (L>90)

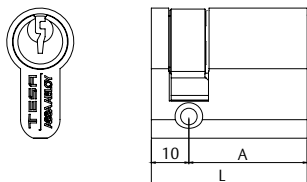
D

Double european



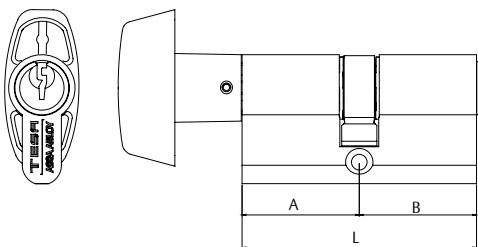
L	A	B	Cam = 15 mm	Finish	Cam = 15 mm	Finish
60	30	30	TE65 30 30 L	Brass	TE65 30 30 N	Nickel
65	30	35	TE65 30 35 L	Brass	TE65 30 35 N	Nickel
70	30	40	TE65 30 40 L	Brass	TE65 30 40 N	Nickel
70	35	35	TE65 35 35 L	Brass	TE65 35 35 N	Nickel
75	30	45	TE65 30 45 L	Brass	TE65 30 45 N	Nickel
75	35	40	TE65 35 40 L	Brass	TE65 35 40 N	Nickel
80	30	50	TE65 30 50 L	Brass	TE65 30 50 N	Nickel
80	35	45	TE65 35 45 L	Brass	TE65 35 45 N	Nickel
80	40	40	TE65 40 40 L	Brass	TE65 40 40 N	Nickel
85	35	50	TE65 35 50 L	Brass	TE65 35 50 N	Nickel
90	30	60	TE65 30 60 L	Brass	TE65 30 60 N	Nickel
90	35	55	TE65 35 55 L	Brass	TE65 35 55 N	Nickel
90	40	50	TE65 40 50 L	Brass	TE65 40 50 N	Nickel
90	45	45	TE65 45 45 L	Brass	TE65 45 45 N	Nickel
100	30	70	TE65 30 70 L	Brass	TE65 30 70 N	Nickel
100	40	60	TE65 40 60 L	Brass	TE65 40 60 N	Nickel
100	50	50	TE65 50 50 L	Brass	TE65 50 50 N	Nickel
110	30	80	TE65 30 80 L	Brass	TE65 30 80 N	Nickel
110	50	60	TE65 50 60 L	Brass	TE65 50 60 N	Nickel
120	30	90	TE65 30 90 L	Brass	TE65 30 90 N	Nickel
120	40	80	TE65 40 80 L	Brass	TE65 40 80 N	Nickel
120	60	60	TE65 60 60 L	Brass	TE65 60 60 N	Nickel
130	30	100	TE65 31 00 L	Brass	TE65 31 00 N	Nickel
140	40	100	TE65 41 00 L	Brass	TE65 41 00 N	Nickel
150	50	100	TE65 51 00 L	Brass	TE65 51 00 N	Nickel
160	60	100	TE65 61 00 L	Brass	TE65 61 00 N	Nickel

Single european.



L	A	B	Cam = 15 mm	Finish	Cam = 15 mm	Finish
40	30	10	TE65 30 10 L	Brass	TE65 30 10 N	Nickel
45	35	10	TE65 35 10 L	Brass	TE65 35 10 N	Nickel
50	40	10	TE65 40 10 L	Brass	TE65 40 10 N	Nickel
60	50	10	TE65 50 10 L	Brass	TE65 50 10 N	Nickel
70	60	10	TE65 60 10 L	Brass	TE65 60 10 N	Nickel
80	70	10	TE65 70 10 L	Brass	TE65 70 10 N	Nickel
90	80	10	TE65 80 10 L	Brass	TE65 80 10 N	Nickel
100	90	10	TE65 90 10 L	Brass	TE65 90 10 N	Nickel

Knob european.



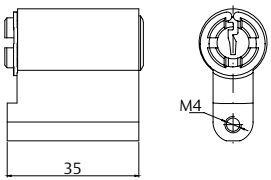
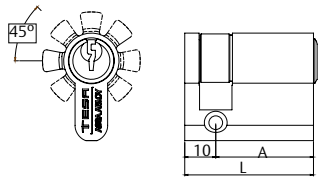
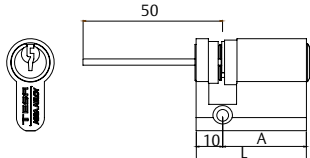
L	A	B	Cam = 15 mm	Finish	Cam = 15 mm	Finish
60	30	30	TE6B 30 30 L	Brass	TE6B 30 30 N	Nickel
65	30	35	TE6B 30 35 L	Brass	TE6B 30 35 N	Nickel
70	35	35	TE6B 35 35 L	Brass	TE6B 35 35 N	Nickel
70	40	30	TE6B 40 30 L	Brass	TE6B 40 30 N	Nickel
80	30	50	TE6B 30 50 L	Brass	TE6B 30 50 N	Nickel
80	40	40	TE6B 40 40 L	Brass	TE6B 40 40 N	Nickel
85	35	50	TE6B 35 50 L	Brass	TE6B 35 50 N	Nickel
90	30	60	TE6B 30 60 L	Brass	TE6B 30 60 N	Nickel
90	45	45	TE6B 45 45 L	Brass	TE6B 45 45 N	Nickel

* To process "master keyed" and "cylinders alike" orders add either AM or KA in each part number, respectively.

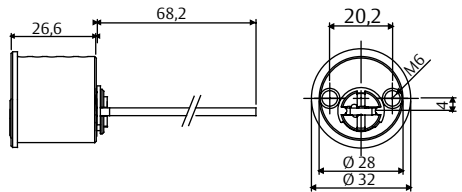
Standard cylinder TE6

European profile

! Only available
for masterkeying

Padlock exchangeable.		L	A	B	Product code	Finish
		-	-	-	TE6CL55L	Brass
		-	-	-	TE6CL55N	Nickel
Adjustable cam. Single profile (8 positions).		L	A	B	Product code	Finish
		40	30	10	TE6W3010L	Brass
		40	30	10	TE6W3010N	Nickel
Adjustable european cylinder.		L	A	B	Product code	Finish
		40	30	10	TE6R3010L	Brass
		40	30	10	TE6R3010N	Nickel
		50	40	10	TE6R4010L	Brass
		50	40	10	TE6R4010N	Nickel

Round profiles

Adjustable round cylinder		Ø	Inside lenght	Outside lenght	Product code	Finish
		28	-	Adjustable	55TE600LT	Brass
		28	-	Adjustable	55TE600LN	Nickel

* To process "master keyed" and "cylinders alike" orders add either AM or KA in each part number, respectively.

Handles

TESA

ASSA ABLOY



Institutional stainless AISI 304 handle

Handles specially designed for offices and institutional buildings with standard applications.

Stainless steel AISI 304 finish

It is an austenitic steel (18% chromium, 8% nickel). Although austenitic steel is not magnetic, once it's been mechanized it can modify its structure and be attracted by a magnet. It offers excellent corrosion resistance, even in outdoors installations.

Features

Recoil spring protected by a Delrin cartridge for the rose. Spiral spring system in institutional plate and long plate. Fixing with a through bolts/screw, except in the institutional plate, which is fixed with through bolts.

Regulations

It meets the requisites of the UNE-EN 1906 standard for building fittings.

It is also above the maximum grade of the corrosion resistance standard UNE-EN 1670.

Ultraviolet resistance: unaffected.

Excellent resistance to chemical attacks.

Fixing system

Depending on each model, fixing is carried out with fixed through bolts, floating through bolts or coach screws straight onto the door's leaf.



Institutional stainless AISI 304 handle

Sena AISI 304

The pack with a rosette includes

- » A set of handles with an internal plate and a cover, a 8x105 mm spindle, 2 recoil springs, 4 coach screws, 2 through bolts, 2 bolts and an Allen key.

The pack with a long plate includes

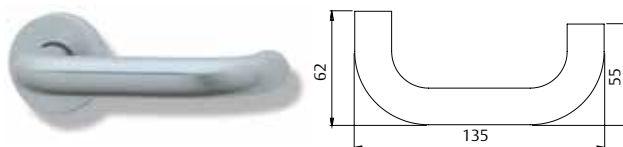
- » A set of handles with an internal plate and a cover, a 8x105 mm spindle, 2 recoil springs, 4 coach screws, 2 bolts and an Allen key.

The pack with a squared plate includes

- » A set of handles with a 1'5 mm-thick internal plate and a cover, a 8x105 mm spindle, 2 recoil springs, 4 floating through bolts, 4 coach screws, 2 through bolts and an Allen key.

Functions

- » Entrance keyhole at 85, 72, 70 and 47 mm.
- » Privacy: deadbolt at 85, 72, 70 and 47 mm.
- » Passage



Rosette	Product code	Finish
Rosette	MS5R800	IS- (includes through bolts)
Long plate*	Product code	Finish
Passage	MS5L800	IS- (includes through bolts)
Cylinder at 47 mm	MS5LR800	IS- (includes through bolts)
Cylinder at 70 mm	MS0L847	IS- (includes through bolts)
Cylinder at 72 mm	MS0L870	IS- (includes through bolts)
Cylinder at 85 mm	MS0L872	IS- (includes through bolts)
Deadbolt at 47 mm	MS0L885	IS- (includes through bolts)
Deadbolt at 70 mm	MSEL847	IS- (includes through bolts)
Deadbolt at 72 mm	MSEL870	IS- (includes through bolts)
Deadbolt at 85 mm	MSEL872	IS- (includes through bolts)
Condensa a 85 mm	MSEL885	IS- (includes through bolts)
Squared plate*	Product code	Finish
Passage	MS5C800	IS- (includes through bolts)
Cylinder at 47 mm	MS0C847	IS- (includes through bolts)
Cylinder at 70 mm	MS0C870	IS- (includes through bolts)
Cylinder at 72 mm	MS0C872	IS- (includes through bolts)
Cylinder at 85 mm	MS0C885	IS- (includes through bolts)
Deadbolt at 47 mm	MS3C847	IS- (includes through bolts)
Deadbolt at 70 mm	MS3C870	IS- (includes through bolts)
Deadbolt at 72 mm	MS3C872	IS- (includes through bolts)
Deadbolt at 85 mm	MS3C885	IS- (includes through bolts)

* Includes one mechanism per set

Institutional stainless AISI 304 handle complements

Key holes ø50

The pack includes:

- » A set with support pieces and covers.
- » 4 coach screws.

Finish

- » IS304



Product code	Finish
MB0RBOM	IS-

Thumb turns ø50

The pack includes:

- » A set with support pieces and covers.
- » 4 coach screws.

Finish

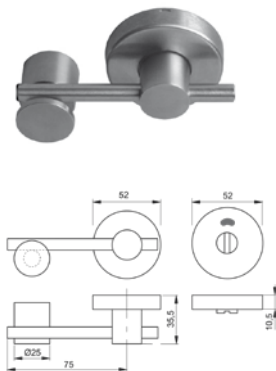
- » IS304



Product code	Finish
MB0REME	IS-

Door frame deadbolt

- » Deadbolt to install in the door frame, no lock requirement.
- » Deadbolt to install in the sliding door frame, no locks requirement.
- » Limited rotation to 180 degrees.



Product code	Features
MARCOEMEIS	Deadbolt without lock
MARCOEMECORIS	Deadbolt for sliding door without lock

Doorstop for floor

Ø 20 x 35 mm

The pack includes:

- » A doorstop
- » A screw
- » A stopper for floor

Finish

- » IS304



Product code	Features
TOPINOX20	Doorstop for floor

Institutional stainless AISI 304 handle Complements

Key holes ø50

The pack includes:

- » A set with support pieces and covers.
- » 4 coach screws.

Finish

- » IS304



Product code	Finishes
MBORBOM	IS-

Thumb turns ø53

The pack includes:

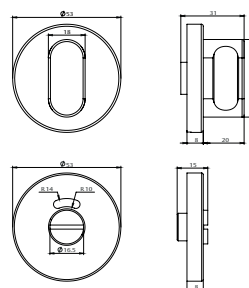
- » A set with support pieces and covers. 4 coach screws.

Finish

- » IS304



Product code	Finishes
MBORBOMSS	IS-



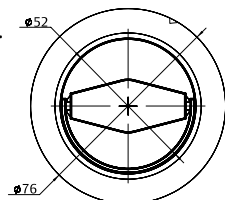
Flush ring Socket pull

The pack includes:

- » A set with support pieces and covers.
- » 4 coach screws.

Finish

- » IS304



Product code	Finishes
MBOREMEOCIS	IS-

Flush pull handle - Oval

The pack includes:

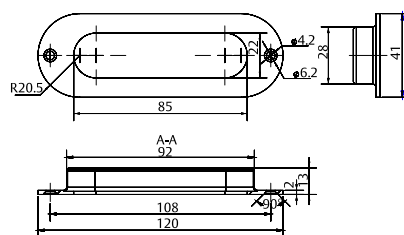
- » 4 coach screws.

Finish» IS304

TIRUNELOCS IS

Finish

Product code



Product code	Finishes
TIRUNELOCS	IS-

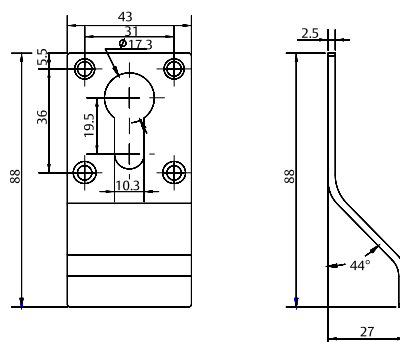
Cylinder pull - Europrofile

The pack includes:

- » 4 wood screws.

Finish

- » IS304



Product code	Finishes
TIRADORBOMIS	IS-

Accessories - Institutional stainless AISI 304

Bolts and socket

Flushbolts - Timber door

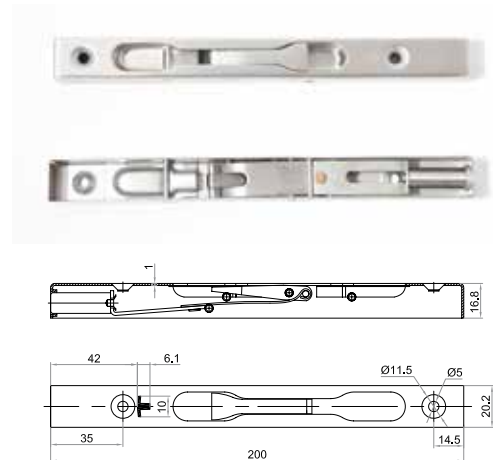
The pack includes:

» Pair, with fixing screws.

Finish

» IS304

Product code	Finishes	Dimensions
DB3/4SS8IS	IS-	3/4 width 8 inches
DB3/4SS10IS	IS	3/4 width 10 inches
DB3/4SS12IS	IS	3/4 width 12 inches



Flushbolts - Steel door

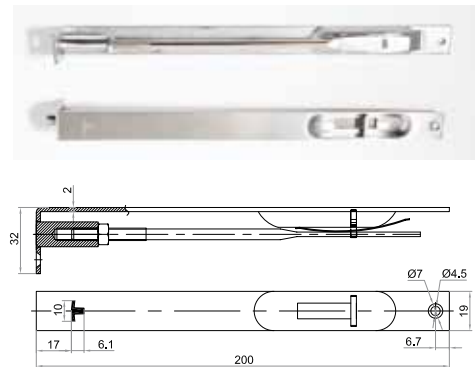
The pack includes:

» Pair, with fixing screws.

Finish

» IS304

Product code	Finishes	Dimensions
DB19SS8IS	IS-	19mm - 8 inches
DB19SS10IS	IS	19mm - 10 inches
DB19SS12IS	IS	19mm - 12 inches



Extension flushbolts

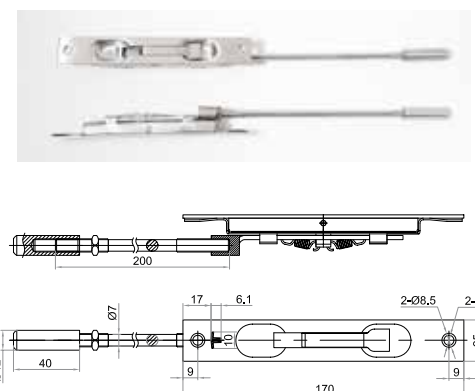
The pack includes:

» Pair, with fixing screws.

Finish

» IS304

Product code	Finishes	Dimensions
DB3/4LSS8IS	IS-	3/4 width 8 inches
DB3/4LSS10IS	IS	3/4 width 10 inches



Dust proof socket

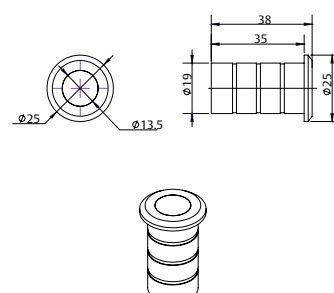
The pack includes:

» With fixing screws.

Finish

» IS304

Product code	Finishes	Dimensions
GUARDAPOLIS	IS-	D25X38X13.5 (inner hole)



Accessories - Institutional stainless AISI 304

Stopper

Half-dome door stopper ø45

The pack includes:
» Rubber plug with fixing screws.

Finish
» IS304

Product code	Finishes
TOPINOX45IS	IS-

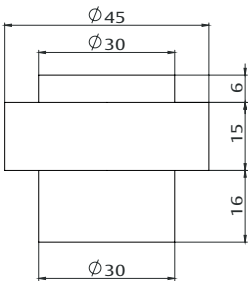


Full-dome door stopper

The pack includes:
» Rubber plug with fixing screws.

Finish
» IS304

Product code	Finishes
TOPINOXRIS	IS-

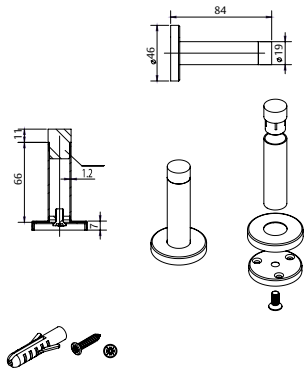


Wall door stopper

The pack includes:
» Rubber plug with fixing screws.

Finish
» IS304

Product code	Finishes
TOPINOX4320IS	IS-

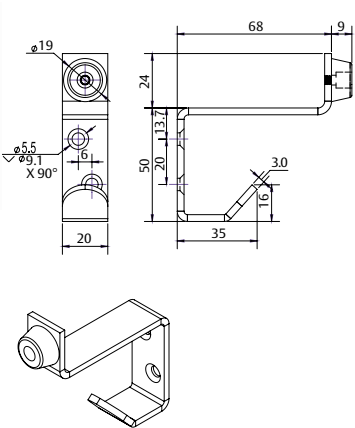


Coath hook w/ rubber buffer

The pack includes:
» Rubber plug with fixing screws.

Finish
» IS304

Product code	Finishes
TOPERCHAIS	IS-



Panic exit devices



ASSA ABLOY



Push type panic exit devices. UNIVERSAL series.

Universal series

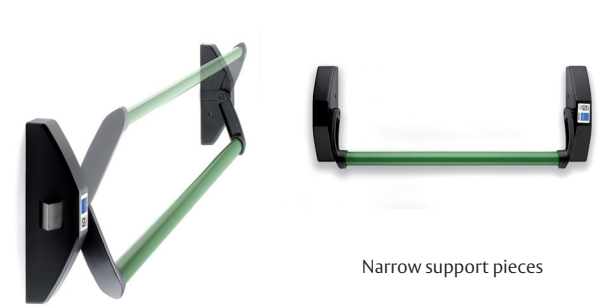
The various functions presented by these serie provide solutions for any type of assembly, both for single and double leaf doors. All models present the following features:

- » Easily reversibility.
- » Compatible with firebreak doors.
- » External operation with:
 - Modular handle: its European-profile 30x10 mm cylinder makes it fit for installation in doors of varying degrees of thickness.
 - Sena handle: equipped with an adjustable cylinder for 32-to-80 mm-thick doors.
- » Narrow support pieces for small size profiles.
- » It can incorporate a microswitch.
- » Easy to install thanks to:
 - Vertical rod devices are adjusted to 40 mm
 - T he horizontal bar can be cut in order to adjust them to the door width.
- » Standard finish:
 - Support pieces, vertical rod devices and auxiliary locks in BLACK (RAL 9005).
 - Active bar in GREEN (RAL 6002).
 - Other finish combinations can be ordered:

Auxiliary locks, covers, and vertical rod devices	Horizontal bar							
	P	V	R	N	C	I	LT	B
N		•	•	•	•	•		
S					•	•		
I						•		
P	•							
LT							•	
C					•			
B								•

N: black (RAL 9005)
V: green (RAL 6002)
R: red (RAL 3000)
P: silver (RAL 9006)
B: white (RAL 9010)
S: satin (nickel plated)
LT: brass plated
C: chrome plated
I: stainless (AISI304)

Finishes examples:
NV: black - green
II: stainless - stainless
LT: brass - brass
...



Narrow support pieces

Reversibility



Adjustment

Door closers

TESA

ASSA ABLOY



Closer selection

Standard Arm

EN Size	Width	Weight	CT550	CT1800 CT2550	CT2700	CT2800	CT300036 + BN3000	CT300057 + BN3057
1	75 cm	20 Kgs						
2	85 cm	40 Kgs	•	•	•		•	
3	95 cm	60 Kgs	•	•	•	•	•	
4	110 cm	80 Kgs		•	•	•	•	
5	125 cm	100 Kgs				•	•	•
6	140 cm	120 Kgs				•	•	•
7	160 cm	160 Kgs						•
Traffic intensity			Medium	High	High	Very High	Extreme	Extreme



Sliding guide rail

EN Size	Width	Weight	CT2000D	CT2300	CT300036 + GD3000	CT4500	CT5000	CT5700
1	75 cm	20 Kgs			•	•	•	
2	85 cm	40 Kgs	•		•	•	•	
3	95 cm	60 Kgs	•	•	•	•	•	
4	110 cm	80 Kgs			•	•	•	
5	125 cm	100 Kgs					•	•
6	140 cm	120 Kgs					•	•
7	160 cm	160 Kgs						•
Traffic intensity			Medium	Medium	Extreme	Very High	Extreme	Extreme



Concealed

EN Size	Width	Weight	TEB 700	TEX14	TEX26
1	75 cm	20 Kgs			•
2	85 cm	40 Kgs	•	•	•
3	95 cm	60 Kgs	•	•	•
4	110 cm	80 Kgs		•	•
5	125 cm	100 Kgs			•
6	140 cm	120 Kgs			•
7	160 cm	160 Kgs			•
Traffic intensity			Medium	Very High	Very High



Floor springs

EN Size	Width	Weight	CTSU70	CTSU100	CTSU200	CTSU300
1	75 cm	100 Kgs				
2	85 cm	100 Kgs	•	•	•	
3	95 cm	100 Kgs	•	•	•	•
4	110 cm	100 Kgs	•	•	•	•
5	125 cm	300 Kgs				•
6	140 cm	300 Kgs				•
7	160 cm	300 Kgs				•
Traffic intensity			Medium	High	High	Very High



Size coding: • Single fixed size • Selectable sizes by position
 → Continuously Adjustable size with fine tune control

Link arm door closers

CT550

The CT550 is a door closer that offers good performance in a compact size.

It can drive doors from size 2 to 3. This means that the CT550 will feel comfortable closing doors weighing from 40 to 60 Kg. and up to 95 cm. door width.

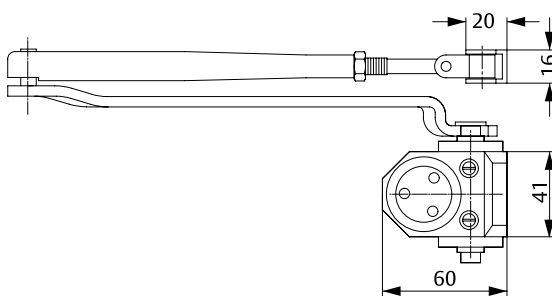
This capability is achieved in a single model thanks to the variable position installation system.

- » Rack and pinion mechanism for smooth and reliable operation.
- » Two valves to adjust both sweep and latch speeds separately.
- » Two sizes (EN2&EN3) in a single model.
- » Reversible.
- » CT501 model permits to hold the door open at any position between 0° and 180°.
- » Suitable for doors opening inwards or outwards.:
 - Standard mounting: Door opens INWARDS, mounting on the pull side.
 - Transom mounting: Door opens OUTWARDS, mounting on the push side.
- » Four finishes: BL: White, NE: Black, PL: Silver

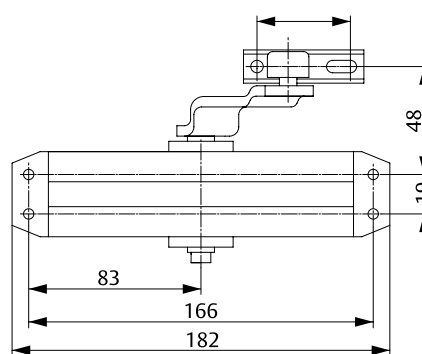
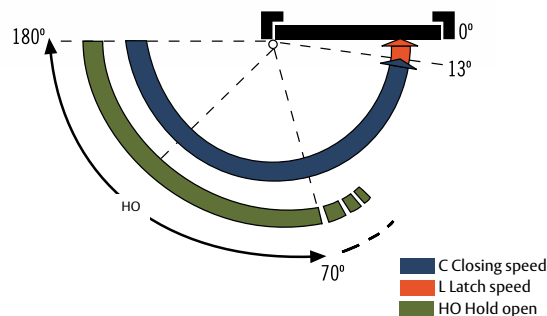
Classification according EN1154:1996+A1:2002

Standard arm transom mountings:

3 8 3 1 1 3



EN 1154 CERTIFIED
Fire door



Model	Size	Door width cm	Door weight Kg	Opening	Adjustable
CT550	2	85	40	180°	S L
(non hold open)	3	95	60	180°	S L
CT501	2	85	40	180°	S L (70-180°)
(hold open)	3	95	60	180°	S L (70-180°)

L

Link arm door closers

CT1800

Multi size door-closer (2-3-4) by means of three mounting positions.
CT1800 has been EN1154 certified and hence valid for Fire Doors.

- » One model for three sizes: EN2, EN3 and EN4
- » Maximum opening up to 180° (depending on door hinges and environment). Up to 105° mounted at size 4.
- » Distance between fixing holes is 19 mm:
CT1800 closers fit any aluminium door.
- » Reversible, non handed.
- » Finishes: White (BL), Black (NE), Silver (PL).

Classification with EN1154:1996+A1:2002

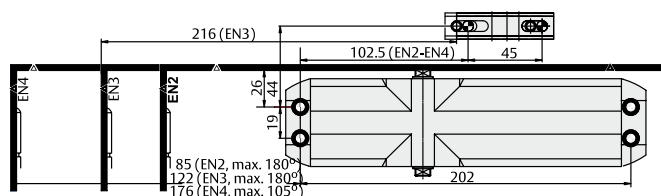
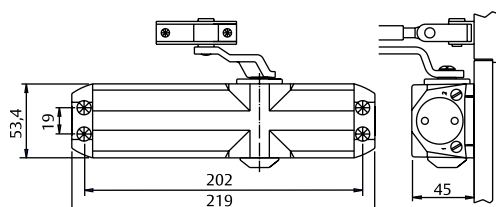
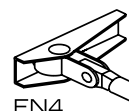
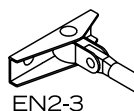
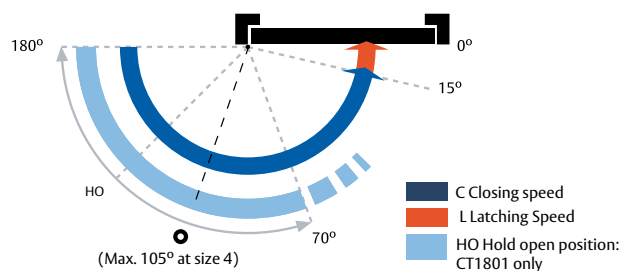
Standard arm transom mountings:

3 8 2/4 1 1 4

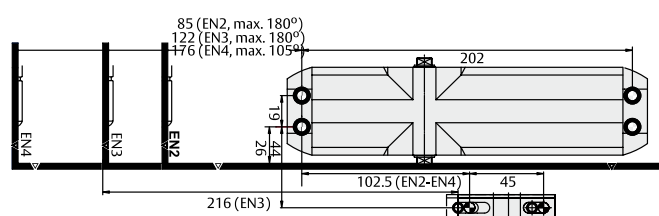
With parallell arm bracket SOP1800

3 8 3 1 1 4

EN 1154 CERTIFIED
Fire door



Standard mounting: Pull side



Transom mounting: Push side

Non hold open (EN1154 Certified)		
Size	Model	Finish
2 - 4	CT180034	BL - NE - PL - BR - OR
Hold open (Not suitable for fire doors)		
Size	Model	Finish
2 - 4	CT180134	BL - NE - PL - BR - OR
Paralell arm installation bracket		
Reference	Finish	
SOP1800	BL - BR - NE - OR - PL	

Size	Door Width cm	Door Weight Kg	Adjustment
2	85	40	VC - GF
3	95	60	VC - GF
4	110	80	VC - GF



SOP1800 Parallel Arm installation bracket.

Link arm door closers

CT2550

CT2550 closers stand out for their versatility and stylish design.

- » One model for three sizes: EN2, EN3 and EN4
- » Unique body and arm hole pattern for three sizes.
- » Maximum opening up to 180° (depending on door hinges and environment).
- » Sweep speed and latching speed fully adjustable with separate valves.
- » Backcheck valve to protect the door against violent openings. CT2550 model only.
- » CT2501: Includes adjustable hold open arm, for any door open position up to 180°.
- » Reversible, non handed.
- » Finishes: White (BL), Black (NE), Silver (PL).

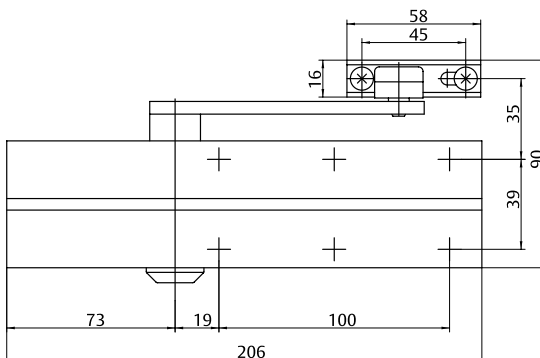
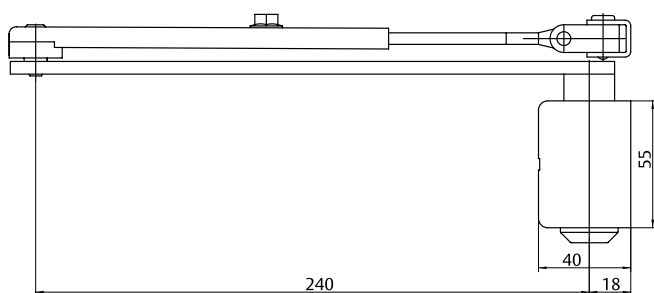
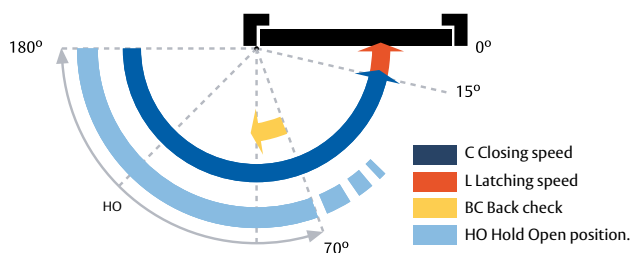
EN 1154 CERTIFIED
Fire door



Classification according EN1154:1996+A1:2002

Standard arm transom mountings:

4 8 2/4 1 1 4



Size (EN 1154)	Ancho puerta cm	Peso puerta Kg
2	85	40
3	95	60
4	110	80

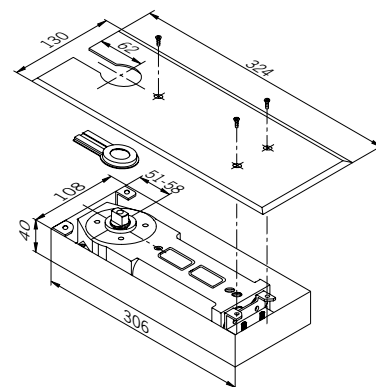
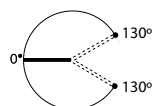
Non hold open (EN1154 certified)		
Size	Model	Finish
2 - 4	CT255034	BL - NE - PL
Hold open (Not suitable for fire doors)		
Size	Model	Finish
2 - 4	CT255134	BL - NE - PL

Floor springs

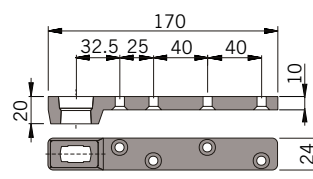
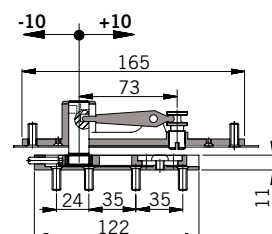
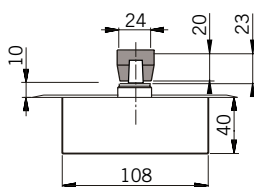
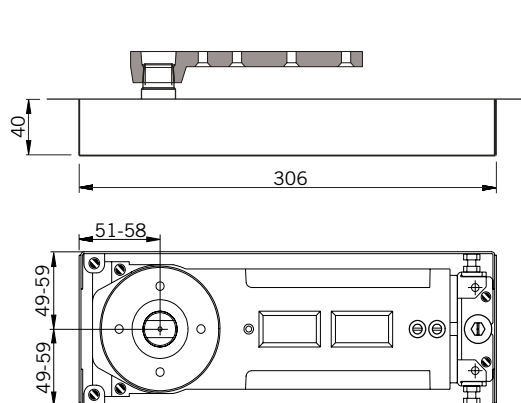
CTSU71. Complete kit for double action doors

The CTSU71 is a floor spring which is supplied as a complete kit that includes everything necessary for wooden or metal made double action doors.

- » Three models for 3 sizes:
 CTSU712 :EN2 Door width: 85 mm.
 CTSU713: EN3 Door width: 95 cm.
 CTSU714: EN4 Door width: 110 cm.
- » Independent valves for closing and latching speeds adjustment.
- » Non handed and suitable for double action doors.
- » Fixed spindle for easy installation.
- » Bottom arm supplied made of solid steel and zinc plated for corrosion resistance.
- » The bottom arm includes countersunk holes for quick and easy installation
- » The Top hinge is supplied and inscludes a needle bearing for superior durability
- » Top hinge with pivot throw adjustment for easy door hanging
- » The Top hinge horizontal position is adjustable (+/- 10 mm) from the door side edge of the door for even easier installation and door levelling corrections.
- » Models can be chosen for Non hold open (-SR-) or Door Hold Open function at 90° (-R0-) .
- » The satin Stainless Steel cover plate is included. (IM finish)
- » Maximum door opening: 150°



Size	Model	Hold open	Finish
2	CTSU712SRIM	-	IM
2	CTSU712R0IM	90°	IM
3	CTSU713SRIM	-	IM
3	CTSU713R0IM	90°	IM
4	CTSU714SRIM	-	IM
4	CTSU714R0IM	90°	IM



Floor springs

CTSU100

The TESA CTSU100 is the most versatile model for door width up to 110 mm and weight up to 100 kg.

» Classification EN1154: 1996 + A1: 2003

CTSU100SR: 3 8 2/4 1 1 4

- » Reversible and suitable for single and double action doors.
- » Continuously adjustable size from EN2 to EN4.
- » Two independent valves for closing speed and latching speed adjustments.
- » Internal HO system. Two models available: with HO at 90° (R0) or 105° (R5). Both Hold Open models allows leaving the door open at any angle from 150° to 180° (free swing zone).
- » Non Hold Open model (SR) features a back stop at 150°.
- » Interchangeable spindle
- » Any spindle from the PIC 150° or PIR220 series can be chosen.
- » Closing speed is controlled from 150° of opening.

Size (EN 1154)	Door width cm	Door weight Kg
2	85	100
3	95	100
4	110	100

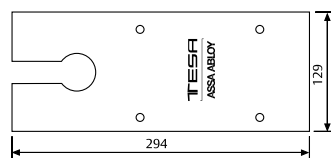
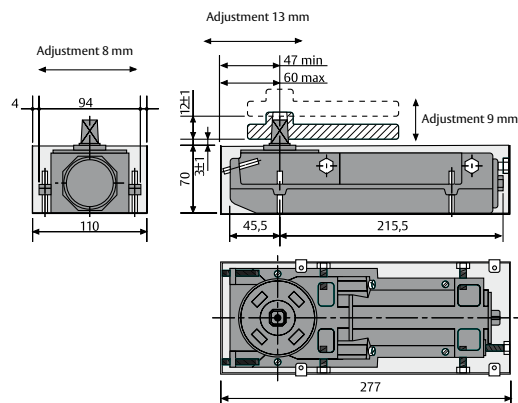
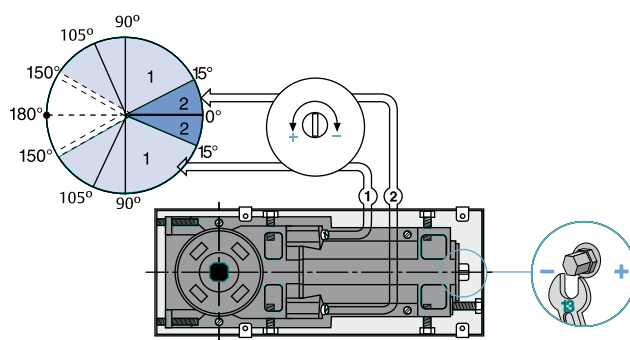
Size	Model	Hold open	Finish
2 - 4	CTSU100SRST	-	Without cover
2 - 4	CTSU100ROST	90°	Without cover
2 - 4	CTSU100R5ST	105°	Without cover

TACTSU100

Cover for the CTSU100.

Model	Finish
TACTSU100IM	Stainless steel
TACTSU100IB	Polished stainless steel
TACTSU100LP	Brass

EN 1154 CERTIFIED
Fire door



Floor springs

CTSU200

The TESA CTSU200 door closer offers the best adaptability to any floor configuration, as the cement box depth is only 47mm deep.

» Classification EN1154: 1996 + A1: 2002

CTSU203SR: 3 8 2 0 1 4

CTSU203SR: 3 8 3 1 1 4

CTSU204SR: 3 8 4 1 1 4

- » Reversible and suitable for single or double action doors.
- » Fixed sizes: EN2, EN3 and EN4.
- » Two independent valves for closing speed and latching speed adjustments.
- » Internal HO system. Two models available: with HO at 90° (R0) or 105° (R5).
- » No spindle supplied. Any spindle from the PIC150 or PIR220 series can be chosen. Other spindles can also be chosen and ordered separately.
- » Closing speed is controlled from 175° of opening.
- » Finishes: IM, LP.

Model	Size (EN 1154)	Door width cm	Door weight Kg
CTSU202	2	85	100
CTSU203	3	95	100
CTSU204	4	110	100

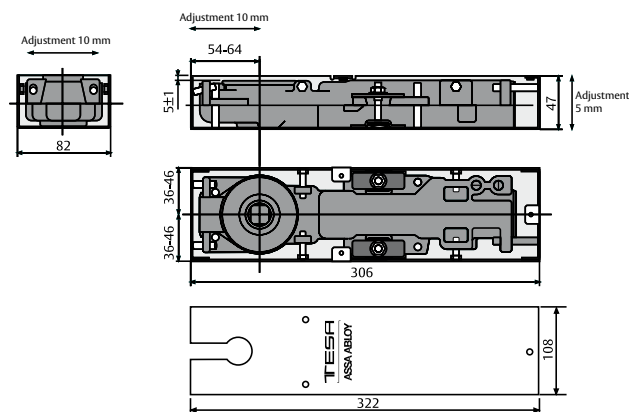
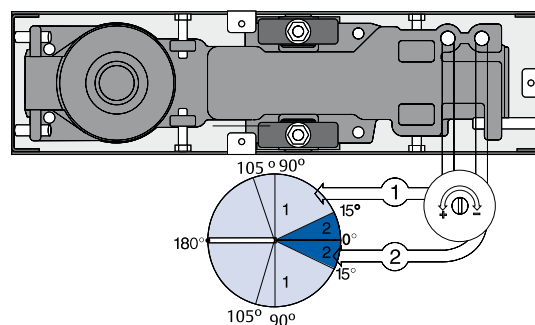
Size	Model	Hold open	Finish
2	CTSU202SRST	-	Without cover
3	CTSU203SRST	-	Without cover
4	CTSU204SRST	-	Without cover
2	CTSU202R0ST	90°	Without cover
3	CTSU203R0ST	90°	Without cover
4	CTSU204R0ST	90°	Without cover
2	CTSU202R5ST	105°	Without cover
3	CTSU203R5ST	105°	Without cover
4	CTSU204R5ST	105°	Without cover

TACTSU200

Cover for the CTSU200

Model	Finish
TACTSU200IM	Stainless steel
TACTSU200IB	Polished stainless steel
TACTSU200LP	Brass

EN 1154 CERTIFIED
Fire door



Floor springs

CTS300

EN 1158 CERTIFIED
Fire door



The TESA CTSU300 door closer is the most powerful floor spring, capable of controlling the motion of doors weighing up to 300 kg.

» Classification EN1154: 1996 + A1: 2003

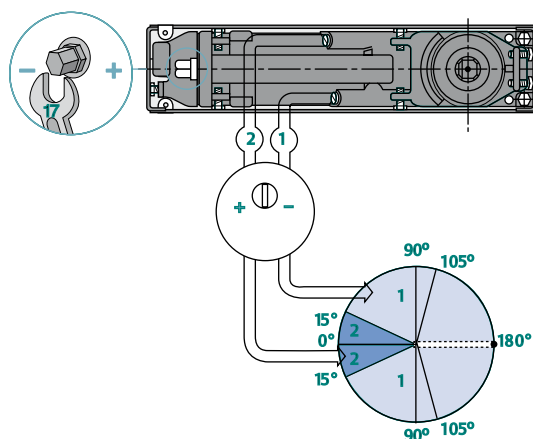
CTS300SR: 3 8 3/6 1 1 4

- » Reversible and suitable for single or double action doors.
- » Continuous size adjustment from EN3 to EN6.
- » Two independent valves for closing speed and latching speed adjustments.
- » Internal backcheck for door protection.
- » Internal HO system. Two models available: with HO at 90° (R0) or 105° (R5).
- » Any spindle from the PIC 150 or PIR220 series can be chosen. » Closing speed is controlled from 175° of opening.



Size (EN 1154)	Door width cm	Door weight Kg
3	95	300
4	110	300
5	125	300
6	140	300

Size	Model	Hold open	Finish
3 - 6	CTS300SRST	-	Without cover
3 - 6	CTS300R0ST	90°	Without cover
3 - 6	CTS300R5ST	105°	Without cover



TACTSU300

Cover for the CTSU300

Model	Finish
TACTSU300IM	Stainless steel
TACTSU300IB	Polished stainless steel
TACTSU300LP	Brass

